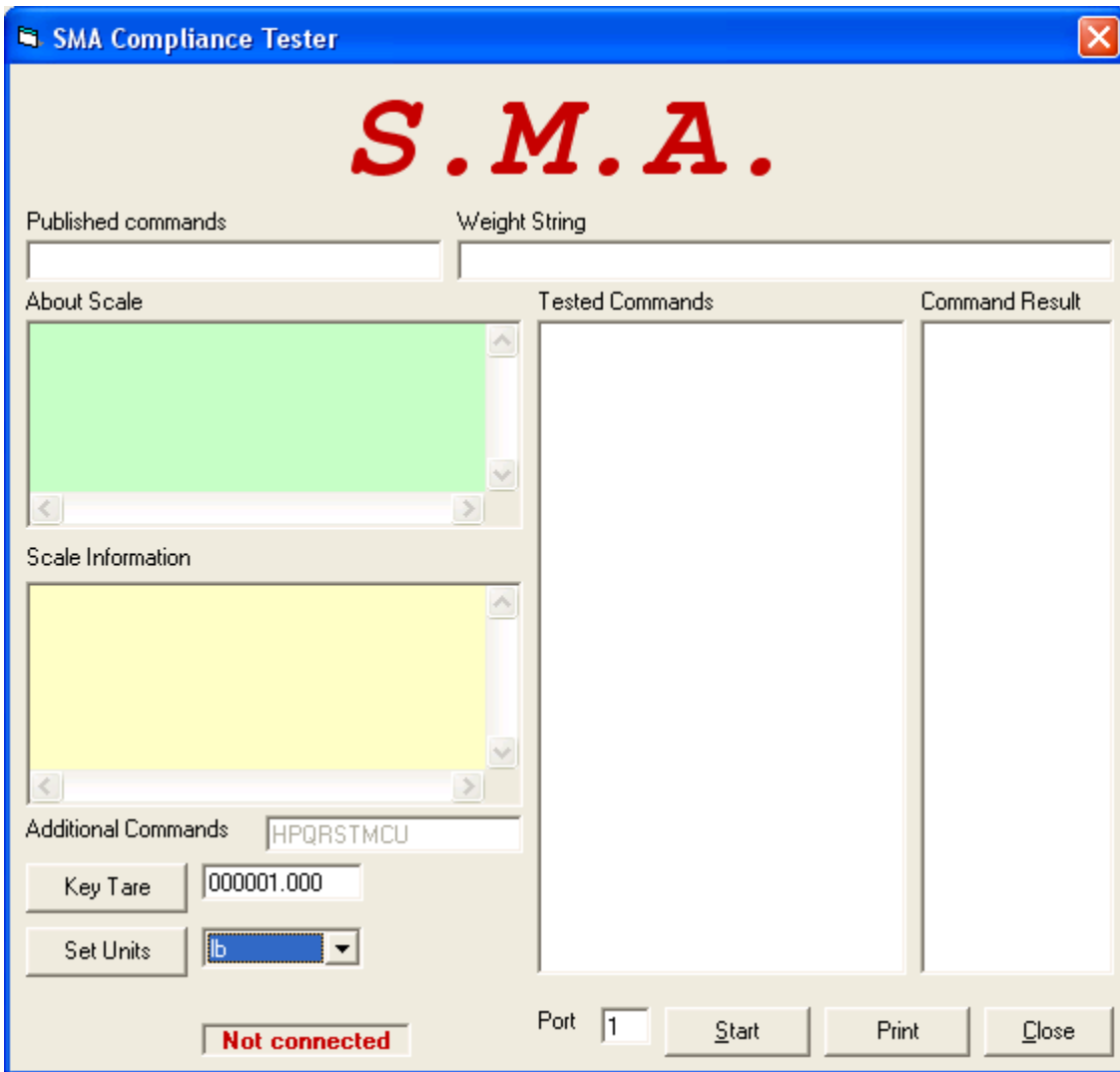


Scale Manufacturers Association

Serial Protocol Tester

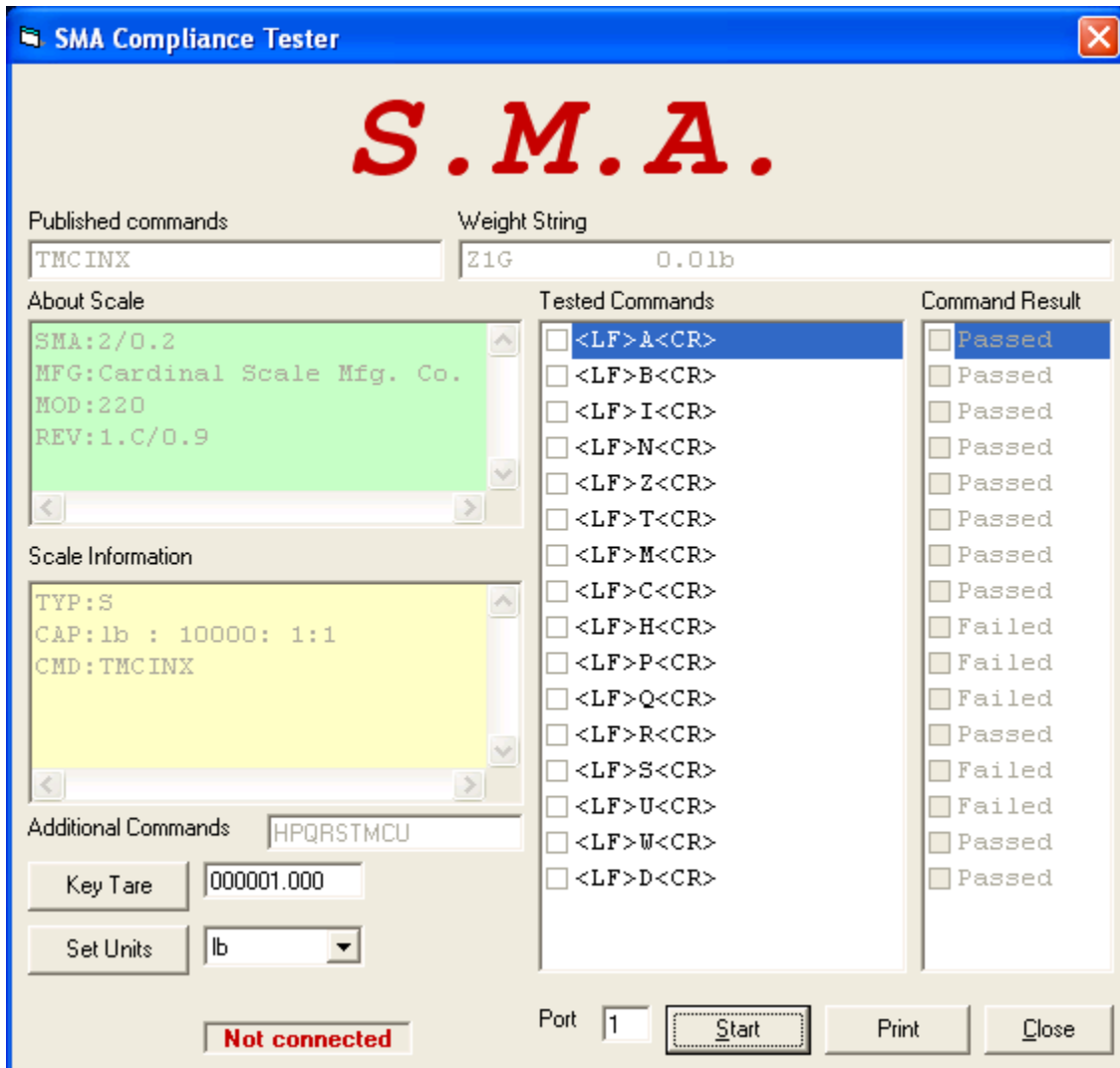
Operation

This tester provides pass/fail testing of the level 1 and level 2 SMA command set. To conduct the test, simply set the target indicator communication parameters to 8 data bits, No parity, and 1 stop bit. Next connect the device to the desired serial port and verify the correct port number is selected in the SMA tester software as shown below.



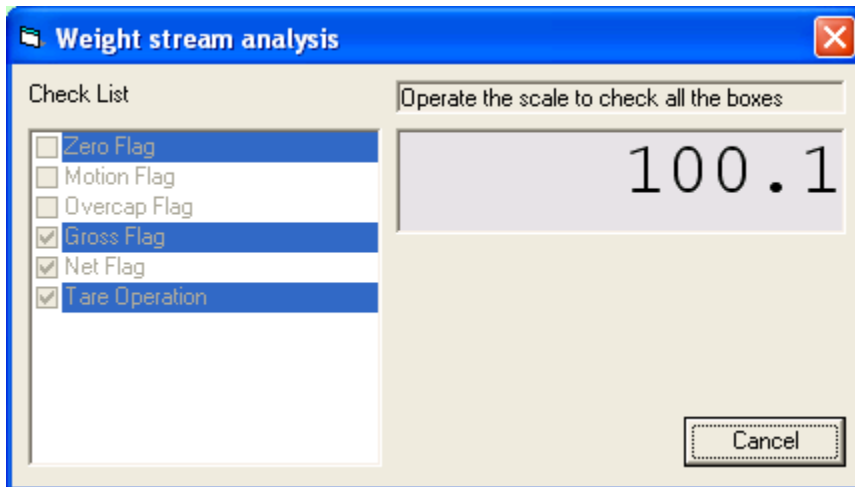
SMA Command Check

If the device is configured with the standard SMA communication settings and connected to the serial port, press the 'Start' button to initiate the test. The status for each tested command will be displayed in the command result list box. If for any reason individual commands needed to be re-run they can be started by clicking the check box next to each command as shown below.



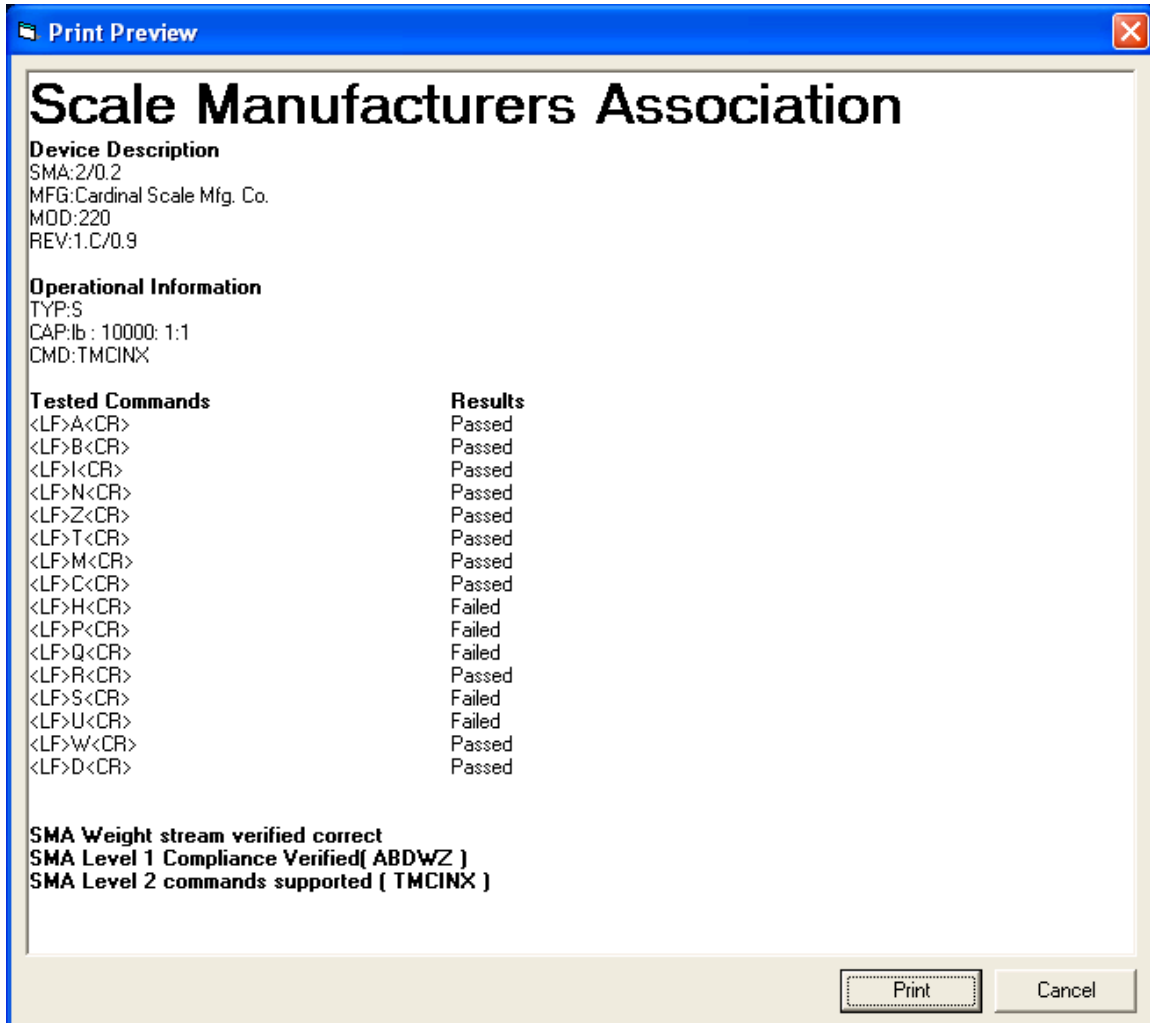
SMA Weight Stream Status Verification

After the command test is completed the status flags are checked as shown in the dialog below. To complete this test, operate the device to provide each of the status flag indications. When all flags are verified the dialog will disappear and the summary of the test is displayed



Testing Summary Window

Op completion of the weight stream analysis, the following summary is displayed and can be printed.



Scale Manufacturers Association
PO Box 26972
Columbus, Ohio
43226-0972
Phone: (866) 372-4627
E-mail: info@scalemanufacturers.org
Web: www.scalemanufacturers.org